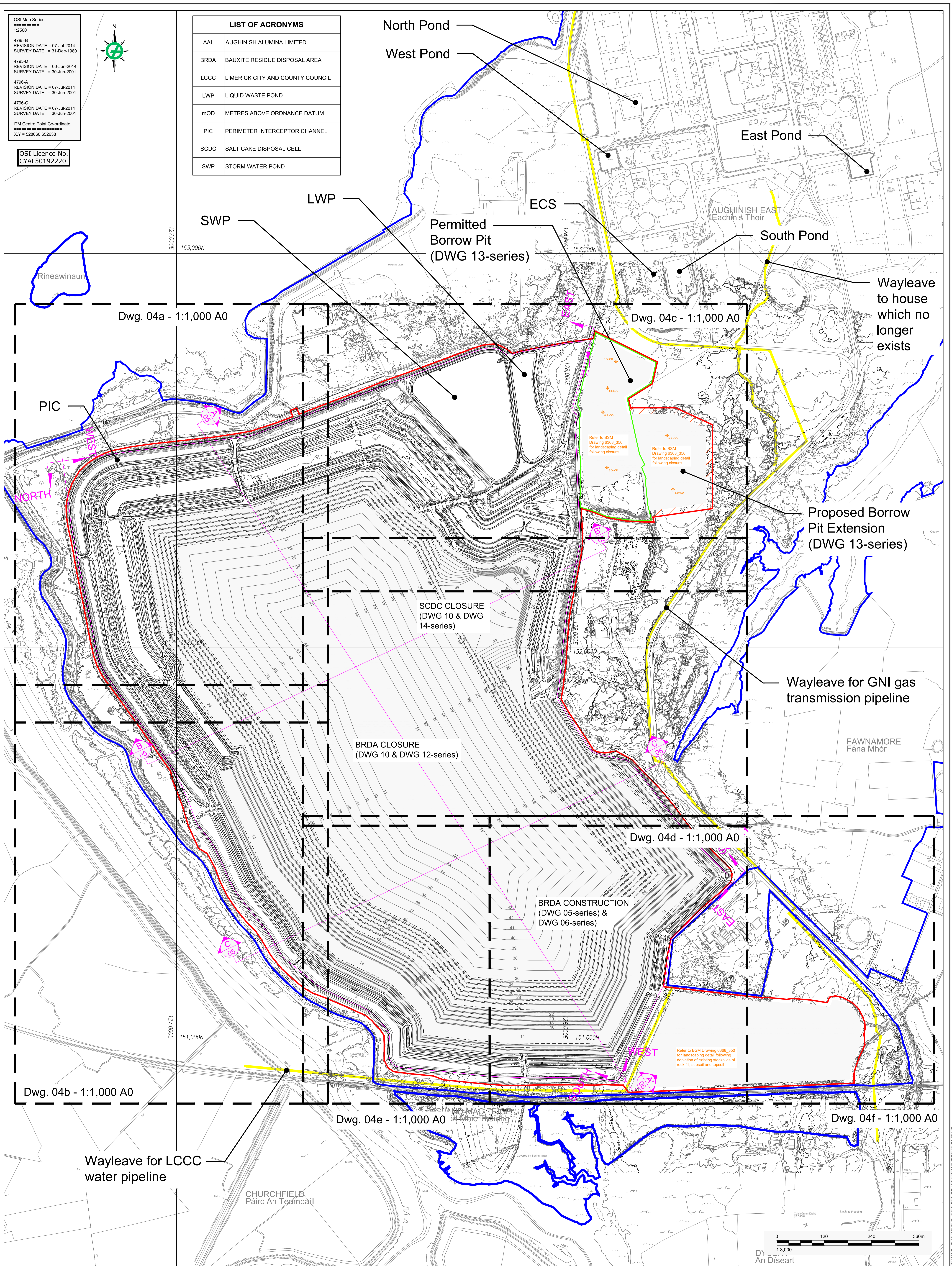


OSI Map Series:
 1:2500
 4795-B
 REVISION DATE = 07-Jul-2014
 SURVEY DATE = 31-Dec-1990
 4795-D
 REVISION DATE = 06-Jun-2014
 SURVEY DATE = 30-Jun-2001
 4795-A
 REVISION DATE = 07-Jul-2014
 SURVEY DATE = 30-Jun-2001
 4795-C
 REVISION DATE = 07-Jul-2014
 SURVEY DATE = 30-Jun-2001
 ITM Centre Point Co-ordinate:
 X,Y = 528960,652638

OSI Licence No.
 CYAL50192220



LIST OF ACRONYMS	
AAL	AUGHINISH ALUMINA LIMITED
BRDA	BAUXITE RESIDUE DISPOSAL AREA
LCCC	LIMERICK CITY AND COUNTY COUNCIL
LWP	LIQUID WASTE POND
mOD	METRES ABOVE ORDANCE DATUM
PIC	PERIMETER INTERCEPTOR CHANNEL
SCDC	SALT CAKE DISPOSAL CELL
SWP	STORM WATER POND



LEGEND

	AAL OWNERSHIP BOUNDARY
	APPLICATION BOUNDARY
	WAYLEAVE
	GROUND CONTOUR (mOD)
	PERMITTED BORROW PIT BOUNDARY
	PROPOSED BORROW PIT EXTENSION FOOTPRINT

NOTES:
 GRID REFERENCES ARE IN METRES & TO IRISH NATIONAL GRID.
 DIMENSIONS AND LEVELS ARE IN METRES, TO O.S. DATUM & CORRESPOND TO APRIL 2021 AERIAL SURVEY FOR EXISTING CONTOURS (DWG 02-SERIES)
 BORROW PIT (PERMITTED & PROPOSED) DRAWINGS ARE PROVIDED IN THE DWG 13 SERIES
 SCDC DRAWINGS ARE PROVIDED ON THE DWG 10 AND IN THE DWG 14-SERIES
 BRDA CONSTRUCTION DRAWINGS ARE PROVIDED IN THE DWG 05-SERIES AND THE DWG-06 SERIES
 BRDA CLOSURE DRAWINGS ARE PROVIDED ON DWG 10 AND IN THE DWG 12-SERIES
 LANDSCAPING DETAILS AT CLOSURE ARE PROVIDED ON THE BSM DRAWING 6368_350 - SERIES

CLIENT	AUGHINISH ALUMINA LTD.		
CONSULTANT	YYYY-MM-DD	2021-Nov-30	TITLE
	DESIGNED	BK	BRDA RAISE PLANNING APPLICATION DRAWINGS
	PREPARED	POB	Proposed Conditions: Site Layout Plan - BRDA to Stage 16
	REVIEWED	BK	PROJECT NO. 20143076
	APPROVED	BK	DRAWING NO. 04
			REV. A
			SCALE 1:3,000 A0